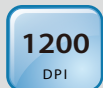




## High Productivity, High Versatility



### Features:

- Scans double-sided color documents up to legal size via ADF
- Fast scan rate up to 60 pages per minute and 120 images per minute at 200 dpi in color, gray, or B&W mode
- Reverse roller technology delivers outstanding feeding reliability
- USB 3.1 Gen1 for high speed transmission
- Ultrasonic multi-feed detection
- Earth-friendly LED technology
- Compact auto document feeder holds documents up to 100 pages
- Easy-to-use button scanning
- Supports 236" (6000 mm, 200 dpi, color duplex ) long page scanning

### A New Generation of Document Scanner

Enhanced with innovative features, the Avison AD345F offers high throughput of 60 ppm and 120 ipm in a compact footprint conserving both space and budget. Unlike common sheet-fed scanners which provide only the auto document feeder and can not accommodate irregular sizes and weights of paper, the AD345F harmoniously combines the benefits of the fast scan rate of the ADF and the convenience of the flatbed unit to meet customer's diverse requirements.

### A Duplex Scanner Suited for Document and Cards

Thanks to the advanced straight paper path and image processing technology, mixed batches of documents with varies sizes and weights can be scanned, appropriately cropped, deskewed, and ready to use. Scan size accepts paper from receipts 50 x 50 mm (2 x 2 in.) to business document 242 x 356 mm (9.5 x 14 in.). The auto document feeder is also robust enough to feed paper up to 400 g/m<sup>2</sup> (110 lb.) and embossed hard cards such as ID cards, credit cards, driver's license, and health insurance card up to 1.25 mm thick.

### Reverse Roller Enhances Feeding Reliability

Designed with the innovative reverse roller for advanced paper separation capability, the AD345F delivers outstanding feeding reliability and operating productivity by effectively reducing the risk of a multi-feed or paper jam.



### Automatic multiple images cropping

In addition, the scanner comes with the convenient feature of multiple images cropping. With this feature, various sizes of documents such as photos, ID Cards, or business cards can be placed on the flatbed and the scanner is able to crop and create multiple images according to the original sizes of the documents in one single scan.

### Paper Protection Technology

The advanced Paper protection technology protects valuable paper from being wrinkled or torn by halting the scan process once a skewed page is detected.

### Color, and Graphical LCD Display

The AD345F is easy to use through the LCD display and buttons on the panel. By selecting your destination and pressing the "Scan" button, the scan can be done and the scanned image can be sent to your specified destination application such as e-mail, printer, or your favorable image-editing software application. Up to nine frequently used scan settings and destinations can be preset for different scanning needs.



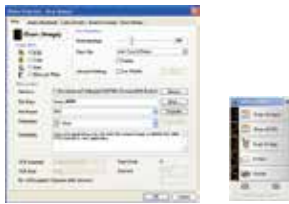
### What We Have Bundled

The AD345F come with TWAIN and ISIS drivers, and are bundled with a suite of powerful software applications that include Avison Button Manager V2, AVScan X and Nuance PaperPort SE 14.

# Avision | AD345F Document Scanner

## Avision's Button Manager V2

Completes your scan with a single step



The Button Manager V2 main screen

Button Manager V2 makes it easy for you to scan and send your image to your favorite destinations with a press one button. Now the new version comes with an innovative feature to let you scan and automatically upload the scanned document to popular cloud repositories such as Google Docs, Microsoft SharePoint or FTP. In addition, the iScan feature allows you to insert the scanned image or recognized text after optional OCR (Optical Character Recognition) process to your text editor such as Microsoft Word to get your job done easily and quickly.

## AVScan X

The Intelligent Document Management Tool



The AVScan X main screen

Document Imaging is the very first step of Document Management. However, poor quality images can cause serious problems to later indexing or storing processes. It may increase scanning labor costs and lowers the OCR accuracy. AvScan X ensures all documents are checked and polished at the time they are scanned such that the image quality is guaranteed before they are ready to use for other purposes. AvScan X is an intelligent scanning and electronic filing solution. AvScan X possesses distinct features that convert and index scanned information into electronic documents for easy storage and fast retrieval.

## Nuance PaperPort SE14

The Professional Choice to Organize and Share Your Documents



The PaperPort SE14 main screen

PaperPort SE 14 is Nuance's most popular scanning and document management solution, carefully designed specifically for home office use. Part traditional file cabinet, part digital-document desktop, PaperPort SE 14 is the fastest and easiest way to scan, share, search and organize your documents. Additionally, PaperPort SE 14 now delivers anytime-anywhere access to your most important files however it's convenient for you – using a PC, Mac, iPhone, iPad, or Android device.



PAPERPORT SE 14



AVScan X



## Avision AD345F Product Specifications

Paper Feeding:	ADF 100-page capacity with flatbed
Scanning Technology:	Contact Image Sensor (CIS)
Light Source:	LED
Card Thickness:	Up to 1.25 mm
Long Page Mode:	6000 mm (236in.)
Document size (ADF):	Min. 50 x 50 mm (2 x 2 in.) Max. 216 x 356 mm (8.5 x 14 in.) (Paper width up to 242 mm (9.5"))
Document Size (Flatbed):	Max. 216 x 297 mm (8.5 x 11.7 in.)
ADF Scanning Speed:	60 PPM/120 IPM (color, A4, 200 dpi) 45 PPM/90 IPM (color, A4, 300 dpi)
Flatbed Scanning Speed:	1.5 sec.(color, A4, 300 dpi)
Paper Thickness:	20 ~ 413 g/m <sup>2</sup> (5 to 110 lb.) (single page) 27~413 g/m <sup>2</sup> (7~110 lb.)
Optical Resolution:	1200 dpi
Output Resolution:	75, 100, 150, 200, 300, 400, 600, 1200 dpi
Output Formats:	B/W, greyscale, 24-bit color
File Formats:	BMP, PNG, GIF, JPEG, PDF, Searchable PDF Multi-Page TIFF, TIFF, RTF, TXT, XPS, DOC, XLS, PPT, DOCX, XLSX, PPTX, HTML.
Bundled Software:	Avision Button Manager V2, Avision AVScan X Nuance PaperPort SE 14
Interface/Drivers:	USB 3.1 Gen1 / TWAIN, ISIS
Power Supply:	Input: 100~240 VAC, 50/60 Hz Output: 24V, 2A
Power Consumption:	Operating: 38 W Ready: 7.5 W Sleep: 1.8 W Off: 0.2W
Environmental Factors:	Operating temperature: 10°C to 35°C (50°F to 95°F) Operating humidity: 10% to 85%
Acoustic Noise:	Ready: <25 dB Operating: <52 dB
Dimensions (W x D x H):	Max.: 754 x 321 x 301.4mm (29.6 x 12.6 x 11.8 in.) Min.: 545 x 321 x 231.3mm (21.4 x 12.6 x 9.0 in.)
Weight:	6.9 kg (15.1 lb.)
Recommended Daily Scanning Volume:	Up to 10,000 sheets
Multi-feed Detection:	Ultrasonic Sensor

We have endeavored to ensure that the information in this manual is accurate and that Avision is not responsible for printing or typographical errors. The above configuration is for reference only. The actual configuration (software, hardware) should be completed with the specification described in the purchase agreement. Avision Inc. owns the intellectual property rights of the product outlook and design and the product outlook and design are subject to change. Avision reserves the right to the interpretation of the product description. Avision, Inc. All rights reserved. Other company and product names mentioned in this document are trademarks of their respective companies. Wherein the third party product is for reference only and Avision does not warrant these products nor is responsible for the efficiency or use of these products.

## System Requirements

CPU:	Intel Core i3 (2.1GHz) or Higher
Memory:	2GB (32bit Windows) 4GB (64bit Windows)
DVD-ROM:	DVD ROM Drive
USB:	USB 3.1 Gen1
Windows' Operating System:	Windows' 10, 8.x, 7, Vista, SP3, XP (32 & 64 bit)

## Contents

Scanner
Power Supply
Quick Guide
USB 3.1 Gen1 Cable
CD-ROM includes:
-Scanner Driver (TWAIN/ ISIS/ WIA Driver)
-Avision Manager V2
-Avision AVScan X
-Nuance PaperPort SE 14



**Avision**  
www.avision.com